

# Basic Ejectors

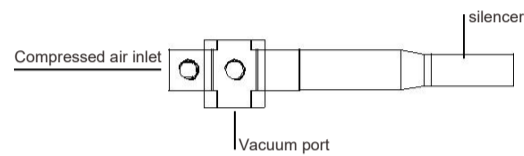
## Basic Ejectors M5010

Suction capacity: 168 L/min to 372 L/min

Basic Ejectors M5010



System Design Basic Ejectors M3010



Ordering Data Basic Ejectors M5010

Type	Vacuum tube type	Vacuum tube series	Ordering Data
M-5010-SI32-2	SI32	2	90.05.01.00134
M-5010-SI32-3	SI32	3	90.05.01.00133
M-5010-XI40-2	XI40	2	90.05.01.00132
M-5010-XI40-3	XI40	3	90.05.01.00131

### Technical Data Basic Ejectors M5010

Type	Maximum vacuum [%]	Maximum suction force [l/min]	Air consumption [l/min]	Operating pressure [bar]	weight [g]	Operating temperature [°C]
M-5010-SI32-2	70	192	90	5	190	-10...80
M-5010-SI32-3	70	342	90	5	190	-10...80
M-5010-XI40-2	91	168	120	5	190	-10...80
M-5010-XI40-3	91	372	120	5	190	-10...80

### Introduction and application

- ◆ Can be mounted directly to any G1/2 external threaded suction cup
- ◆ Configure a 2- or 3-level vacuum tube that can be customized to meet your specific needs. The Si vacuum tube provides high vacuum flow and the Xi vacuum tube provides high vacuum.

### Design

- ◆ Body made of aluminum
- ◆ Single vacuum generator
- ◆ The seal is made of NBR rubber
- ◆ alternate component: vacuum table

# Basic Ejectors

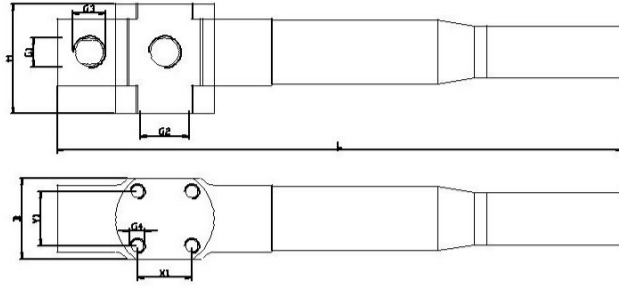
## Basic Ejectors M5010

Suction capacity: 168 L/min to 372 L/min

# TC-Grip

### Design Data Basic Ejectors M5010

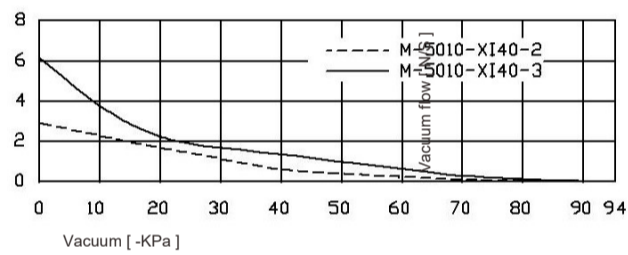
M5010



Type	Dimensions [mm]									
	B	G1	G2	G3	G4	H	L	X1	Y1	
M-5010-2	33	G1/4-F	G1/2-F	G1/4-F	M6-F	44.5	173	22	22	
M-5010-3	33	G1/4-F	G1/2-F	G1/4-F	M6-F	44.5	229	22	22	

### Performance curve Basic Ejectors M5010

Vacuum flow corresponding to different vacuum degrees at 5 bar working pressure



Vacuum flow corresponding to different vacuum degrees at 5 bar working pressure

